

Verkoopsplan

piarlala

UNIT A308/71 + A308/72

Pierlala North

Duplex

4 Slaapkamers

4 Badkamers

Bruto opp.: 190,4m²

Bruto opp. mezz.: 149,88m²

Terras opp.: 13,69m²

Zeezicht

Ontwikkeld door:

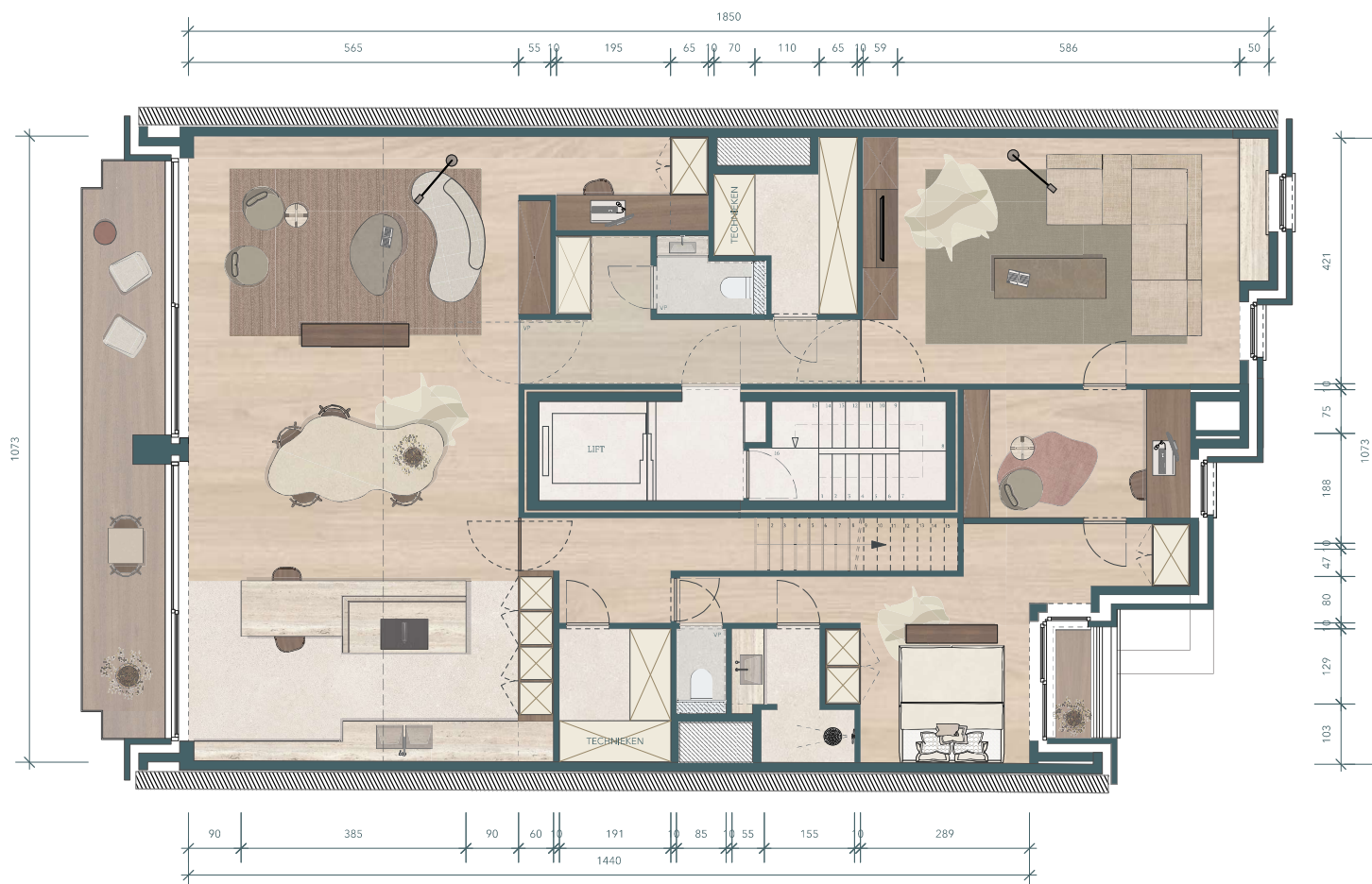

wedvelop

info@wedvelop.be

www.wedvelop.be

Duinenwater 2

8300 Knokke-Heist



Verkoopsplan

piarlala

UNIT A308/71 + A308/72

Pierlala North

Duplex

4 Slaapkamers

4 Badkamers

Bruto opp.: 190,4m²

Bruto opp. mezz.: 149,88m²

Terras opp.: 13,69m²

Zeezicht

Ontwikkeld door:


wedvelop

info@wedvelop.be

www.wedvelop.be

Duinenwater 2

8300 Knokke-Heist

